

# **The SUCELLOG Project Triggering the creation of biomass logistic centres by the agro-industry**

**Cosette Khawaja, Rainer Janssen  
WIP Renewable Energies**

**EUBCE 2015  
Vienna, 3 June 2015**



# Background

European energy scenario needs



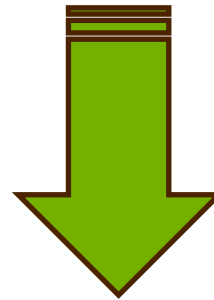
European agricultural sector needs



Agricultural waste has a big potential



Diversification of business activity



**Adapt agro-industries to operate as logistic centres for solid biomass production**  
**with low investment cost**



# Project concept



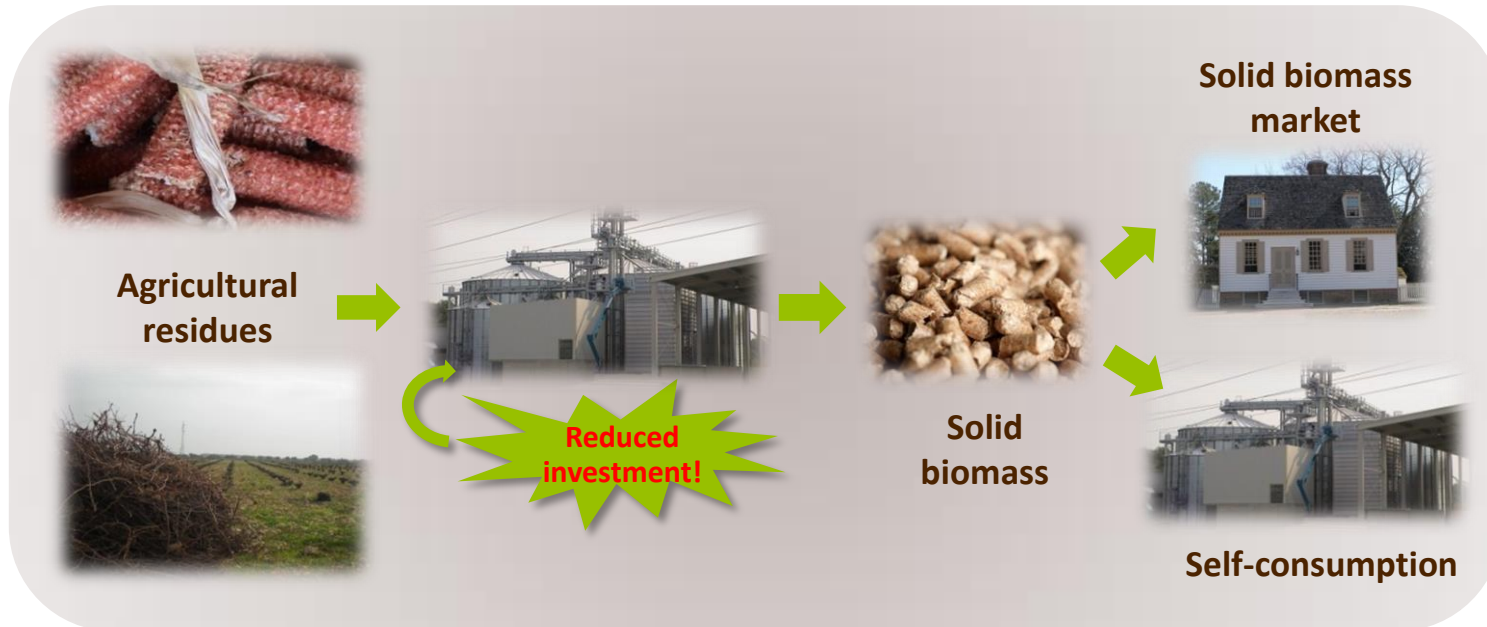
- Compatibility with existing equipment/ facilities for conditioning of raw biomass
- They produce residues or have easy access to residues
- Work under seasonal regime

## AGRO-INDUSTRIES as SEASONAL BIOMASS LOGISTIC CENTRE

Usual operation  
(Nov-Feb)



Operation as  
biomass logistic  
centre  
(Mar-Oct)



**SUCELLOG** goal is to foster the participation of the agrarian sector in the supply of sustainable solid biomass by:

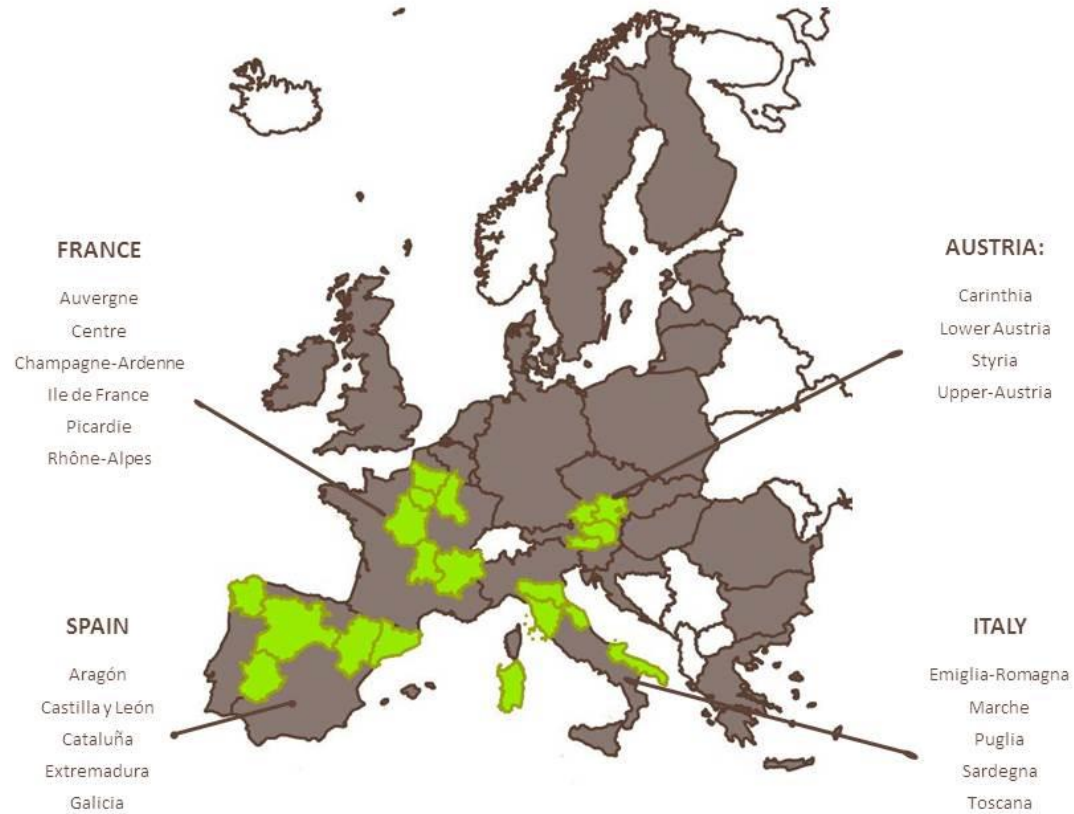
- **Providing technical support, helping decision-making and accompanying agro-industries** willing to start operating as solid biomass logistic centres.



- **Creating capacity building** in regional and national agrarian associations to provide this service to their associates beyond the end of the project.



# Target regions





## 1. Determination of regional framework and stakeholder engagement

- ✓ Assessment of available biomass resources and their geographical location
- ✓ Determination of potential areas for the development of agro-industry logistic centres

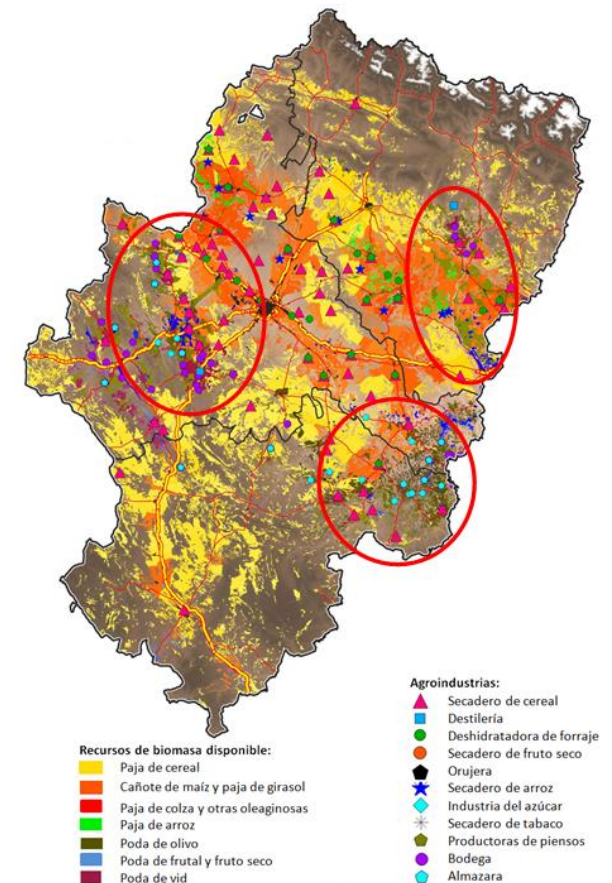


Figura 2: Localización y tipo de agroindustrias y recursos en Aragón.

- 1. Determination of regional framework and stakeholder engagement**
  - ✓ Evaluation of both technical and non-technical barriers for the implementation of SUCELLOG concept in the agro-industries
  - ✓ Engagement of agro-industries to the project





## Engagement actions results

More than 15 personal meetings per country= 66

1 evaluation per target region = 20 evaluations

1 workshop per target region = 27 workshops

Registry of regional stakeholders per region = 20

10 potential beneficiaries per target region= 160

Available biomass evaluated at regional scale 20

475 regional workshops participants

207 questionnaires filled

66 bilateral meetings per country

## Spain

### Available biomass resources:

Mainly maize straw and pruning residues.

### Potential agro-industry sectors:

Forage dehydration facilities, cereal dryers, rice dryers, sugar industry, nut industry, tobacco dryers, distilleries and oil pomace industries.

### Potential areas:

Potential areas were detected in all target regions.

## France

### Available biomass resources:

Mainly straw from herbaceous crops (cereal, rape and maize).

### Potential agro-industry sectors:

Forage dehydration facilities, cereal dryers, sugar industry, distilleries, tobacco dryers, cellars, oil extraction industries and feedstuff producers.

### Potential areas:

Potential areas were detected in all target regions except for Ile-de-France.

## Italy

### Available biomass resources:

Cereal and maize straw, prunings from olive trees and vineyards and residues from olive oil and wine agro-industries.

### Potential agro-industry sectors:

Forage dehydration facilities, cereal dryers, rice dryers, tobacco dryers, distilleries, oil pomace industries and sugar industries.

### Potential areas:

Potential areas were detected in all target regions.

## Austria

### Available biomass resources:

Mainly corn cobs and cereal straw.

### Potential agro-industry sectors:

Cereal dryers and animal feedstuff industries.

### Potential areas:

Potential areas were detected in all target regions.



## 2. Development of tailor-made business model

- ✓ Selection of 4 agroindustries (Categorie 1)  
according to selected criteria

Name	Region	Country
Cooperativa Agraria San Miguel	Aragón	Spain
Luzéal	Champagne-Ardenne	France
Le Rene S.C.	Toscana	Italy
Tschiggerl Agrar Gmbh	Styria	Austria

More information about the selection process is available on the project website



## 2. Development of tailor-made business model

- ✓ Biomass procurement & competitiveness with other uses
- ✓ Solid biomass market and consumers assessment in the area
- ✓ Assessment of existing equipment and human resources capacities
- ✓ Analysis of present management and business plan



- Technical, economic and sustainable feasibility of the logistic centre
- Development of a tailor-made business model

### 3. Creation and monitoring of the agro-industry logistic centres

### 4. Auditing services and start-up diagnosis

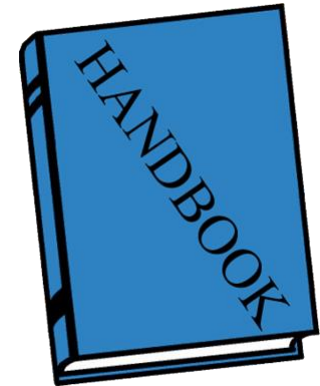
- Facilitate the decision making to agro-industries in becoming an agro-industry logistic centre
- 20 beneficiaries /country
  - 10 (Category 2) → feasibility study and full audit
  - 10 (Category 3) → start-up diagnosis

**Beneficiary Category 2:** already aware about their possibilities to start a new business as a biomass logistic centre

**Beneficiary Category 3:** do not have experience and awareness about the role they can play as solid biomass providers

## 5. Transfer of knowledge

- 3 Handbooks: → beginners (Category 3)  
→ medium aware users (Category 2)  
→ highly aware users (Category 1)
- Building capacity for NAAs and RAAs in the target regions and in other countries concerning the auditing service.







## Sucellog in brief

Concept

Target countries and regions

Support service to  
agro-industries

Support service to agrarian  
associations



## SUCELLOG

**SUCELLOG** aims to widespread the participation of the agrarian sector in the sustainable supply of solid biofuels in Europe. **Sucellog** action focuses in an almost unexploited logistic concept: the implementation of agro-industry logistic centres in the agro-industry as a complement to their usual activity evidencing the large synergy existing between the agro- economy and the bio-economy.

Agro-industry facilities can be utilised in the idle periods to handle and pre-treat biomass feedstocks (mainly from agricultural residues) to produce quality solid biomass to be introduced into the market.

**SUCELLOG** project (IEE/13/638/SI2.675535) is supported by the European Commission under the Intelligent Energy Europe Programme. "The sole responsibility for the content of this webpage lies with the authors. It does not necessarily reflect the opinion of the European Union. Neither the EACEP nor the European Commission are responsible for the content of this webpage."

## News & Events

new

**Proceedings of  
the IEE-II  
Bioenergy  
projects  
conference are  
now available**

**Support to  
agrarian  
associations**

Cooperatives congress

Valencia, Spain  
26 February 2015

# Partners



**CIRCE - Research Centre for Energy Resources and Consumption**  
Spain    Coordinator: Eva López    Email: [sucellog@fcirce.es](mailto:sucellog@fcirce.es)



**WIP – Renewable Energies**  
Germany



**SCDF - Services Coop de France**  
France



**DREAM - Dimensione Ricerca  
Ecologia Ambiente**  
Italy



**RAGT – RAGT Energie SAS**  
France



**Lk Stmk - Styrian Chamber of  
Agriculture and Forestry**  
Austria



**SPANISH COOPERATIVES –  
Cooperativas Agro-alimentarias  
de España**  
Spain



**Thank you for your attention !!**

**Cosette Khawaja, Rainer Janssen**

**Cosette.Khawaja@wip-munich.de**

**Rainer.Janssen@wip-munich.de**

**www.wip-munich.de**

